

Low Level Light Devices (Cosmetic Devices Retailed For Home Use)

Cosmetic Home options:



Xtreme **HOME devices** designed specifically for the ease and convenience of home use.

This lightweight, user friendly product is great for clients unable to come in for multiple sessions each week, as well as those who live too far, travel too much, or who have gone through their program and understand the value and convenience of the home device.

Not for Commercial Use

75 Diode (4) panels
100 Diode (5) panels
Full Year Warranty



TIP:

Similar in cost to Laser Caps but easy to use and convenient, helps with compliance and can be shared with friends and relatives hygienically.

Xtreme 25



This affordable home device has 25 diodes, which is 5x's the # of diodes as the Xtreme Brush; which houses 5 diodes.

Better coverage than other handhelds.

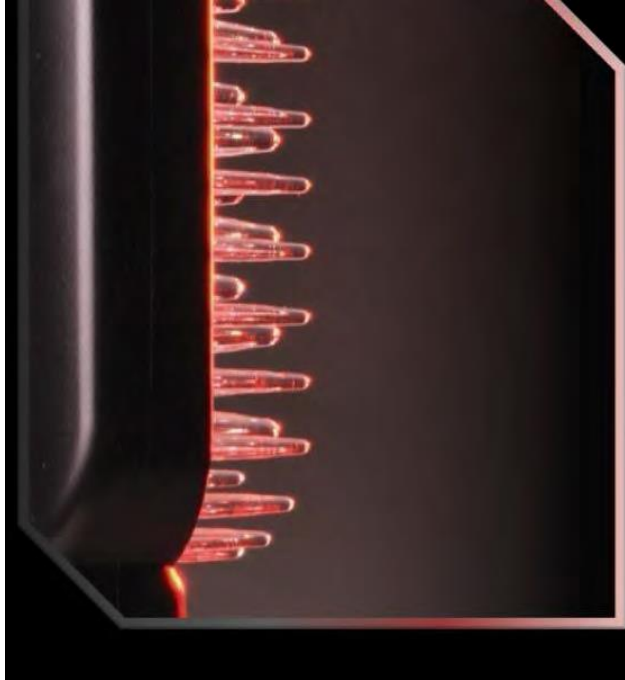
Replaceable batteries.

25 Diodes 650nm / 4.9-5mw

Where does it FIT? – The most diodes of any handheld.

Xtreme 25 is recommended for those who travel, live a distance from the professional hair center.

Ideal for use in conjunction with professional services and also great for maintenance; following a professional hair program.



Xtreme Hand Held Brush BEST VALUE ANYWHERE!

Looks the same as the 25 Diode Brush, but has Dual Technology: Low Level Light Diodes + LED

5 Diodes 650nm / 4.9-5mw

12 LEDS - 660nm

Where does it FIT? - Best value in a low cost hand held brush and more profitable than others.

Inexpensive, yet effective, this brush is recommended for those who travel, live a distance from a treatment center, or who use it in conjunction with their professional sessions.

Also, beneficial for home maintenance use.